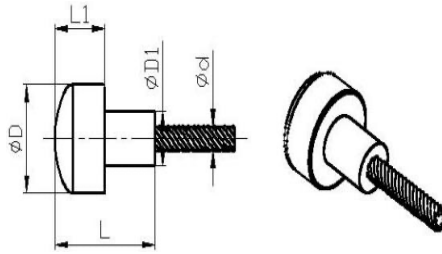
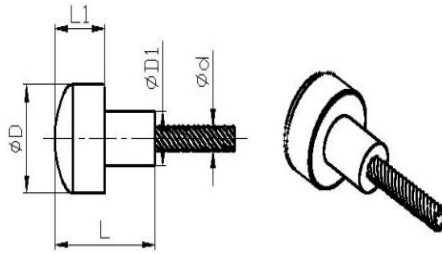


ITEM NO.	Wire diameter (d)	DIMENSION				MINI BREAK LOAD (kgf)
		D	D1	L	L1	
M-01-311	Ø0.8	4.5	3	6.0	2.0	40
M-01-009	Ø0.8	4.9	2.3	6.3	4.0	40
M-01-065	Ø0.8	7.6	2.3	6.4	4.0	40
M-01-215	Ø0.8	7.6	2.3	6.4	4.0	40
M-01-260	Ø0.8	7.8	/	6.7	4.2	40
M-01-418	Ø1.0	6.0	3.8	4.5	1.5	50
M-01-703	Ø1.0	9.0	3	7.0	1.8	50
M-01-307	Ø1.0	9.5	6	7.0	4.0	50
M-01-450	Ø1.0	12.5	8.5	6.5	/	50
M-01-263	Ø1.0 coating	11.5	2.5	4.7	3.2	35
M-01-560	Ø1.0	7.0	3.5	7.5	3.5	50
M-01-681	Ø1.0	8.0	5	10.5	2.5	50
M-01-799	Ø1.0	9.0	5.5	7.5	3.5	50
M-01-702	Ø1.2	4.3	2	6.0	2	80
M-01-998	Ø0.8 coating Ø1.2	4.3	2.6			
M-01-055	Ø1.2	6.0	3.2	8.0	4.0	100
M-01-594	Ø1.2	6.0	3	7.0	3.0	100
M-01-152	Ø1.2	6.4	3.3	7.6	/	100
M-01-176	Ø1.2 coating	8.0	5.5	10.0	4.0	50
M-01-669	Ø1.2 coating	4.0	3	6.0	2.0	50
M-01-630	Ø1.2 coating	4.5	3	6.0	2.0	100
M-01-242	Ø1.2	5.8	3.4	12.0	3.0	100
M-01-314	Ø1.25	5.8	3.4	12.0	3.0	100



ITEM NO.	Wire diameter (d)	DIMENSION				MINI BREAK LOAD (kgf)
		D	D1	L	L1	
M-01-096	Ø1.35	7.8	4.8	10.6	2.0	150
M-01-218	Ø1.35	8.0	5	10.5	2.3	100
M-01-379	Ø1.5	5.4	3.4	10.0	4.0	150
M-01-100	Ø1.5	5.5	3	9.6	3.0	150
M-01-380	Ø1.5	5.8	3.8	12.0	6.0	120
M-01-682	Ø1.5	6.0	4	9.0	3.5	100
M-01-005	Ø1.5	6.0	3.2	8.0	4.0	150
M-01-275	Ø1.5	6.0	3.2	8.0	4.0	150
M-01-442	Ø1.5	6.0	/	8.0	/	150
M-01-573	Ø1.5	6.0	/	8.0	/	150
M-01-561	Ø1.5	6.0	3.2	8.0	4.0	150
M-01-573-1	Ø1.5	6.0	3.2	8.0	4.0	150
M-01-573-2	Ø1.5	6.0	3.2	8.0	4.0	150
M-01-651	Ø1.5	6.0	3.5	9.5	4.0	150
M-01-057	Ø1.5	8.0	5.5	10.0	4.5	150
M-01-228	Ø1.5	8.0	4	12.8	/	150
M-01-520	Ø1.5	6.3	4.6	12.4	4.8	150
M-01-586	Ø1.5	6.0	4	9.0	3.0	150
M-01-662	Ø1.5	8.0	5	9.0	1.5	150
M-01-788	Ø1.5	9.4	9	9.0	6.0	150
M-01-843	Ø1.5	9.5	5.2	12.9	2.9	150
M-01-764	Ø1.5	11.8	6	19.5	5.0	150
M-01-909	Ø1.5	7.6	5.2	18.4		151



ITEM NO.	Wire diameter (d)	DIMENSION				MINI BREAK LOAD (kgf)
		D	D1	L	L1	
M-01-056	Ø1.8	6.4	4.8	8.8	4.9	150
M-01-438	Ø2.0	5.5	3.5	10.0	/	250
M-01-328	Ø2.0	6.0	4	10.0	/	250
M-01-021	Ø2.0	6.0	3.5	8.0	4.0	300
M-01-562	Ø2.0	6.0	3.5	8.0	4.0	300
M-01-369	Ø2.0	6.0	4	11.0	3.5	250
M-01-365	Ø2.0	6.3	5	9.0	6.0	300
M-01-018	Ø2.0	6.5	5	8.5	4.5	300
M-01-481	Ø2.5	6.0	6	17.5	4.5	200
M-01-366	Ø2.5	6.0	4	10.0	4.5	350
M-01-327	Ø2.5	6.0	4	11.0	/	300
M-01-485	Ø2.5	6.0	4.4	16.0	6.0	300
M-01-001	Ø2.5	12.0	6	27.0	8.0	350